

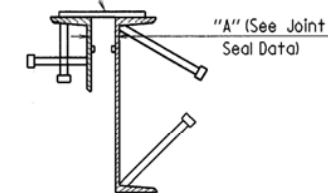
DATE REVISED	DATE FILMED	DATE REVISED	DATE FILMED	FED. ROAD DIST. NO.	STATE	FED. AID PROJ. NO.	SHEET NO.	TOTAL SHEETS
				6	ARK.			
				JOB NO.		100126	42	132
						06890	CONT. UNIT	43049

JOINT SEAL DATA

"A" Joint Width Perpendicular To Joint @ 60°F	"B" Perpendicular To Joint	"C" Uncompressed Seal Width	"W" Width Between Plates	Bumper Plate Size
1 1/8"	2 1/4" ±	3"	5/8"	1" x 5/8"

① Installation is limited to 40° F. min. and 80° F. max.

For Transverse Strike-Off:
Plate, Angle, or other shapes, attached to Channels (or Angles) for Blocking

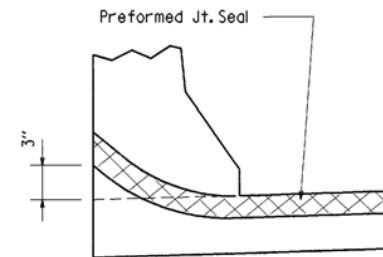


Note: Blocking Detail shown for joint at End Bents.

DETAILS FOR BLOCKING EXPANSION JOINT DEVICE

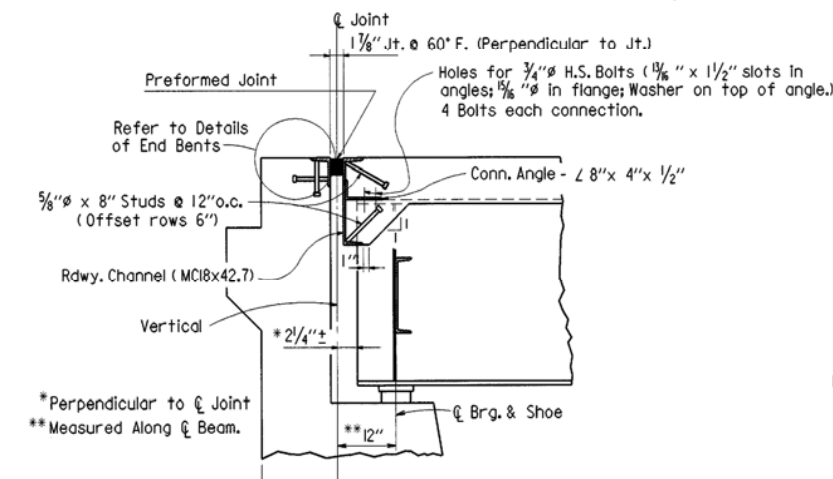
N.T.S.

Note: Each expansion joint device shall be blocked in the shop by the fabricator to the dimension "A", and the blocking details shall be shown on the Shop Drawings. The blocking shall not be removed until the slab on one side is complete. Blocking shall be placed within 2 feet of each end of the device and with a maximum spacing of 8 feet. Removal shall be just before or after pouring the second side of the joint, as directed by the Engineer.



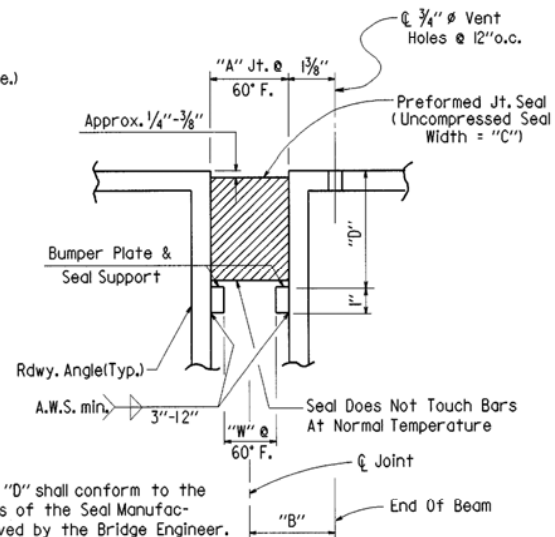
JOINT SEAL PLACEMENT AT CURB

N.T.S.



JOINT AT END BENTS

N.T.S.



DETAIL OF JOINT SEAL & SUPPORT

N.T.S.

Note: The Seal shall be in one piece (without splices) for the full length of the Joint, except that lengths 55 feet and longer may have a factory made splice. Splices, when required, shall be shown on the Shop Drawings and shall be placed near the high ends of the Roadway. Separation of the Splice during installation shall be because for rejection of the Seal.

Note: Concrete shall be hand packed under joint armor.

JOINT SEAL DATA

Material Thickness of Thicker Part Joined (Inches)	Minimum Size of Fillet Weld (Inches)	Single Pass Weld Must Be Used
To 3/4" inclusive	1/4"	
Over 3/4"	3/8"	

Note: When a fillet weld size, as shown on the plans, is larger than the minimum, the first pass shall be that specified for minimum size of fillet weld.



BRIDGE ENGINEER

SHEET 1 OF 4
DETAILS OF
104'-0" CONT. COMP. W-BEAM UNIT
MUD CREEK
ROUTE SEC.
ARKANSAS STATE HIGHWAY COMMISSION
LITTLE ROCK, ARK.
DRAWN BY: W.M.J. DATE: 10-10-01
CHECKED BY: B.E.F. DATE: 10-25-01
DESIGNED BY: B.E.F. DATE: 8-31-01
BRIDGE NO. 06890 DRAWING NO. 43049

1, 550, 3001, 100126, RWME548, B100126X1.SI

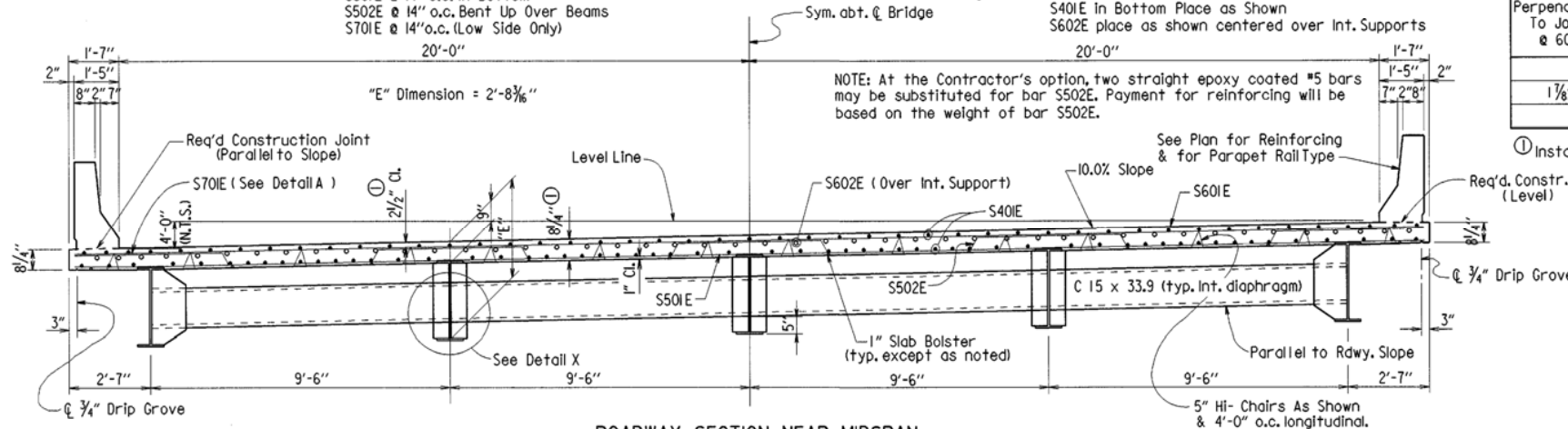
SLAB REINFORCING

Transverse: S601E @ 14" o.c. in Top
S501E @ 14" o.c. in Bottom
S502E @ 14" o.c. Bent Up Over Beams
S701E @ 14" o.c. (Low Side Only)

NOTE: Class I Protective Surface Treatment shall be applied to the Roadway Surface and to the Face & Top of the Concrete Parapet Rail.

Longitudinal: S401E in Top (Placed as Shown 12" max.)
S401E in Bottom Place as Shown
S602E place as shown centered over Int. Supports

NOTE: At the Contractor's option, two straight epoxy coated #5 bars may be substituted for bar S502E. Payment for reinforcing will be based on the weight of bar S502E.



ROADWAY SECTION NEAR MIDSPAN

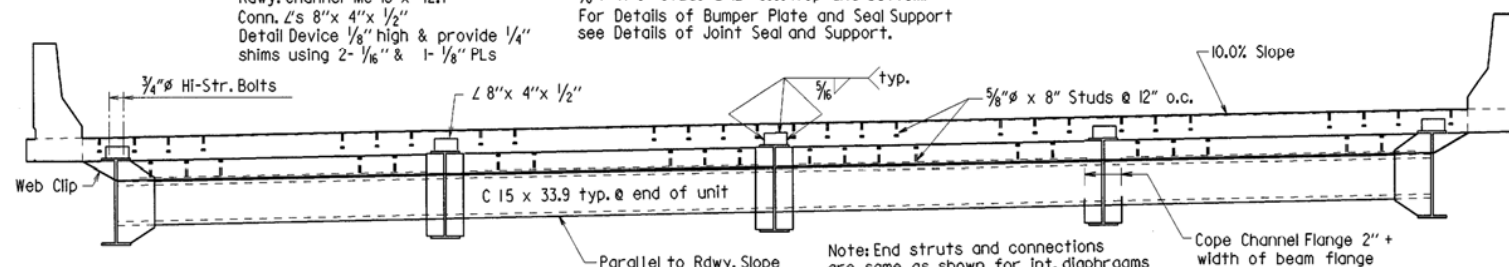
(Looking Forward)
N.T.S.

① Tolerance Minus = 1/4"
Plus: Equal to amount of slab thickening used to meet slab thickness tolerance. See Adjustment For Slab Thickness Tolerance. Dwg. No. 43051.

Expansion Device:

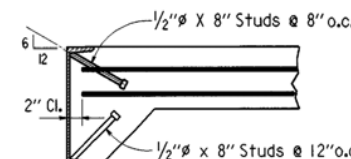
Rdwy. Channel-MC 18 x 42.7
Conn. L's 8"x 4"x 1/2"
Detail Device 1/8" high & provide 1/4" shims using 2-1/8" & 1-1/8" PLs

5/8" x 8" Studs @ 12" o.c. (top and bottom)
For Details of Bumper Plate and Seal Support see Details of Joint Seal and Support.



VIEW AT JOINT

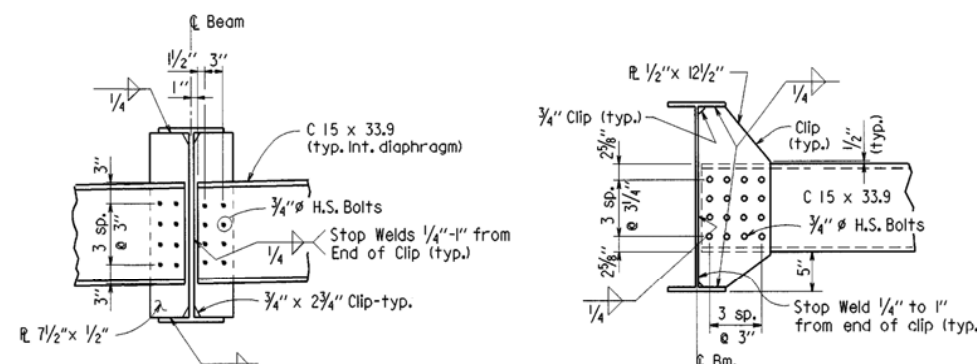
N.T.S.



Note: As an alternate to 5/8" studs, 1/2" x 8" studs spaced as shown may be used. Use weight of 5/8" stud as basis of measurement of structural steel in anchors.

DETAILS OF ALTERNATE ANCHORS

1" = 1'-0"



DIAPHRAGM CONNECTIONS AT EXTERIOR BEAMS

N.T.S.

BAR LIST

MK	No. Required	Length	Pin Dia.	Bending Diagrams (Dimensions are out to out of bars.)
S401E	315	36'-6"	Str.	
S501E	69	42'-10"	Str.	
S502E	68	43'-8"	3"	
S601E	69	42'-10"	Str.	
S602E	92	24'-0"	Str.	
S603E	12	4'-8"	Str.	
S604E	4	49'-2"	Str.	
S605E to S641E	4 Ea.	4'-10" to 4'-3"	Str.	
S701E	87	10'-9"	6"	
P401E	219	6'-4"	2"	
P402E	219	5'-8"	2"	
P403E	28	3'-2"	2"	
P404E	28	5'-10"	2"	
P405E	24	6'-1"	Str.	
P406E	12	5'-6"	Str.	
P407E	24	7'-0"	Str.	
P408E	12	6'-6"	Str.	
P409E	70	8'-6"	Str.	
P601E	35	8'-6"	Str.	